

Could this be sepsis?

Sepsis is a medical emergency and needs immediate treatment.

It happens when the body is fighting an infection but it starts to attack itself. Sepsis can damage the heart, blood vessels, lungs, kidneys and blood clotting systems, and can even cause death. The best chance of getting better from sepsis is to treat it quickly.

Knowing if your child has sepsis is tricky because many of the initial symptoms are like those we see in common mild infections. The difference with sepsis is that your child will become more severely ill: the symptoms listed below can be a sign that more severe disease is present.

Sepsis is rare but we all need to know what to look for.

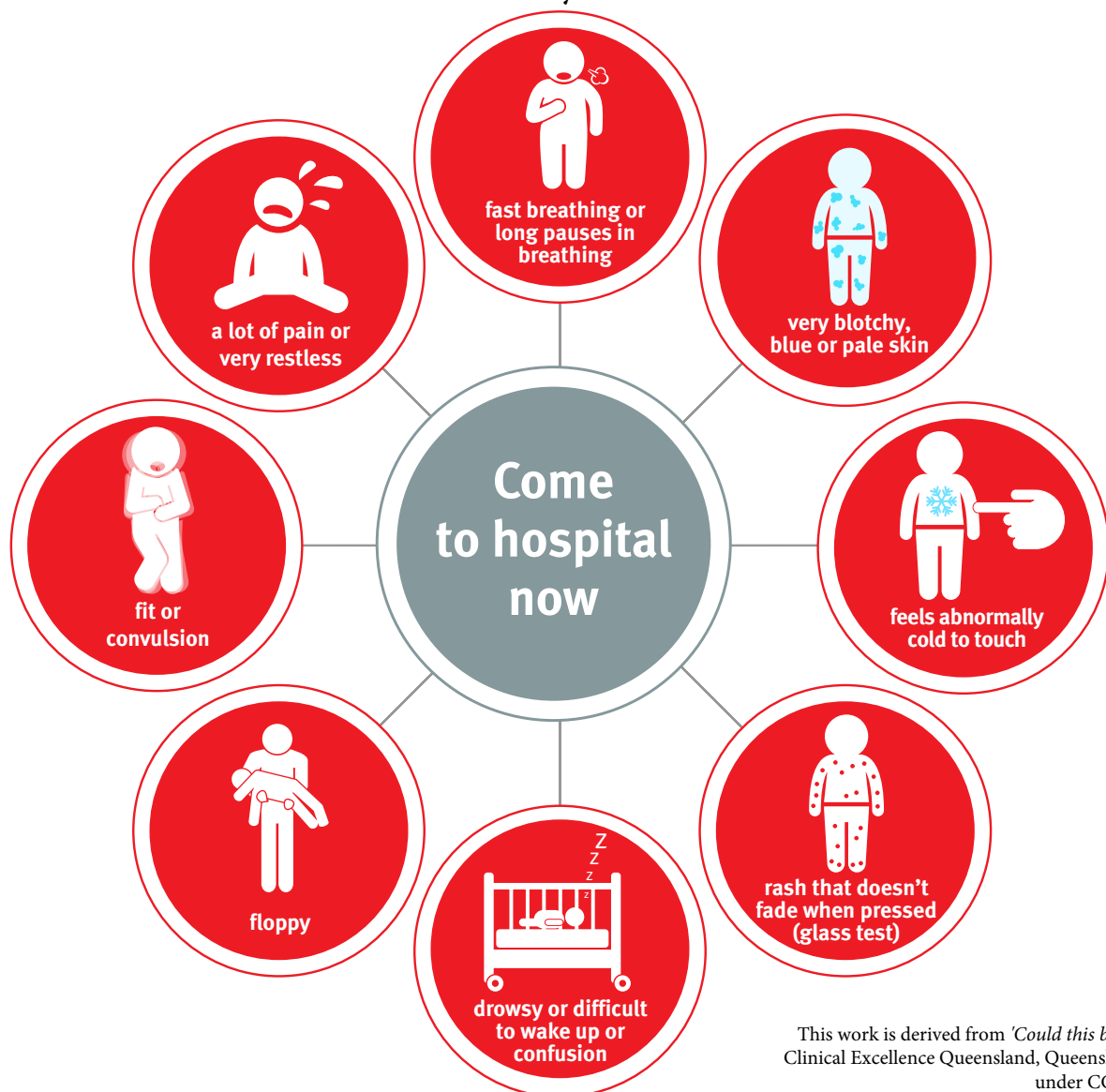
You know your child best and we need you in our team.

Trust your gut feeling

If you feel your child is more unwell than ever before or this illness is different from other times - just ask your doctor or nurse "Could this be sepsis?"

Knowing the signs of sepsis

Any ONE of these may mean your child is critically unwell. **Come to hospital straight away - DON'T DELAY. Ambulance - call 000 - if severely unwell.**



This work is derived from 'Could this be sepsis?' by Clinical Excellence Queensland, Queensland Health under CC BY 3.0AU